

Inter Agency Relationship
in compiling
IMTS, BOP, and SITS
(Indonesia experience)

Regional Workshop on International Merchandise
Trade Statistics

Shuzou, China, 11-13 September 2017

INTRODUCTION



Merchandise Trade Statistics



- Indonesia's merchandise trade statistics is compiled accordance/ refer to UN Publication, International Merchandise Trade Statistics (IMTS): Concepts and Definitions Rev 3, 2010.
- Compilation of merchandise trade statistics is based on General Trade System.
- Export statistics recorded in FOB (Free on Board)
- Import statistics recorded in CIF (Cost of Insurance and Freight)

Source of Data

Merchandise trade statistics is compiled from :
Custom Declaration Documents (Declaration of Import and Export Goods), in type of soft and hard copy .



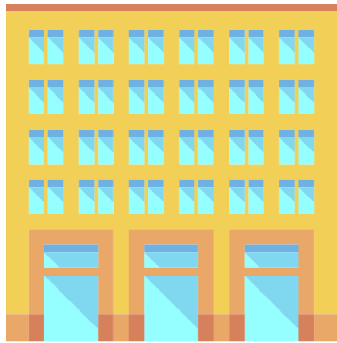
Custom Office Indonesia has to send the documents based on Memorandum of Understanding among Bank Indonesia - Custom Office - BPS No.13/KS/10-VIII/2011 updated No. 10/KS.M/05-VIII/2016

Flow of Documents

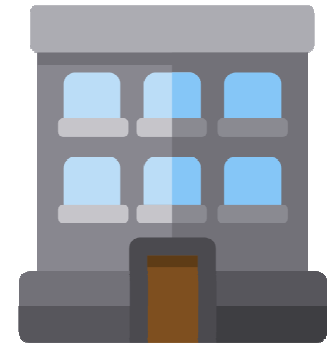
Softcopy Documents (99%)

by system

Customs Office



BPS

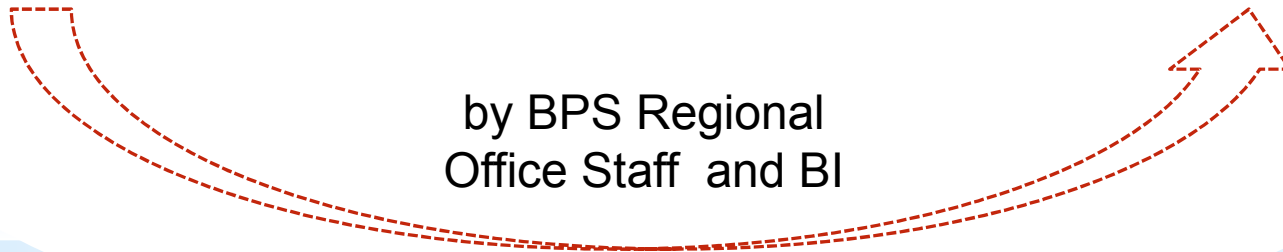


SOFTCOPY+HARDCOPY



by BPS Regional
Office Staff and BI

Hardcopy Documents (1%)



INTER AGENCY RELATIONSHIP



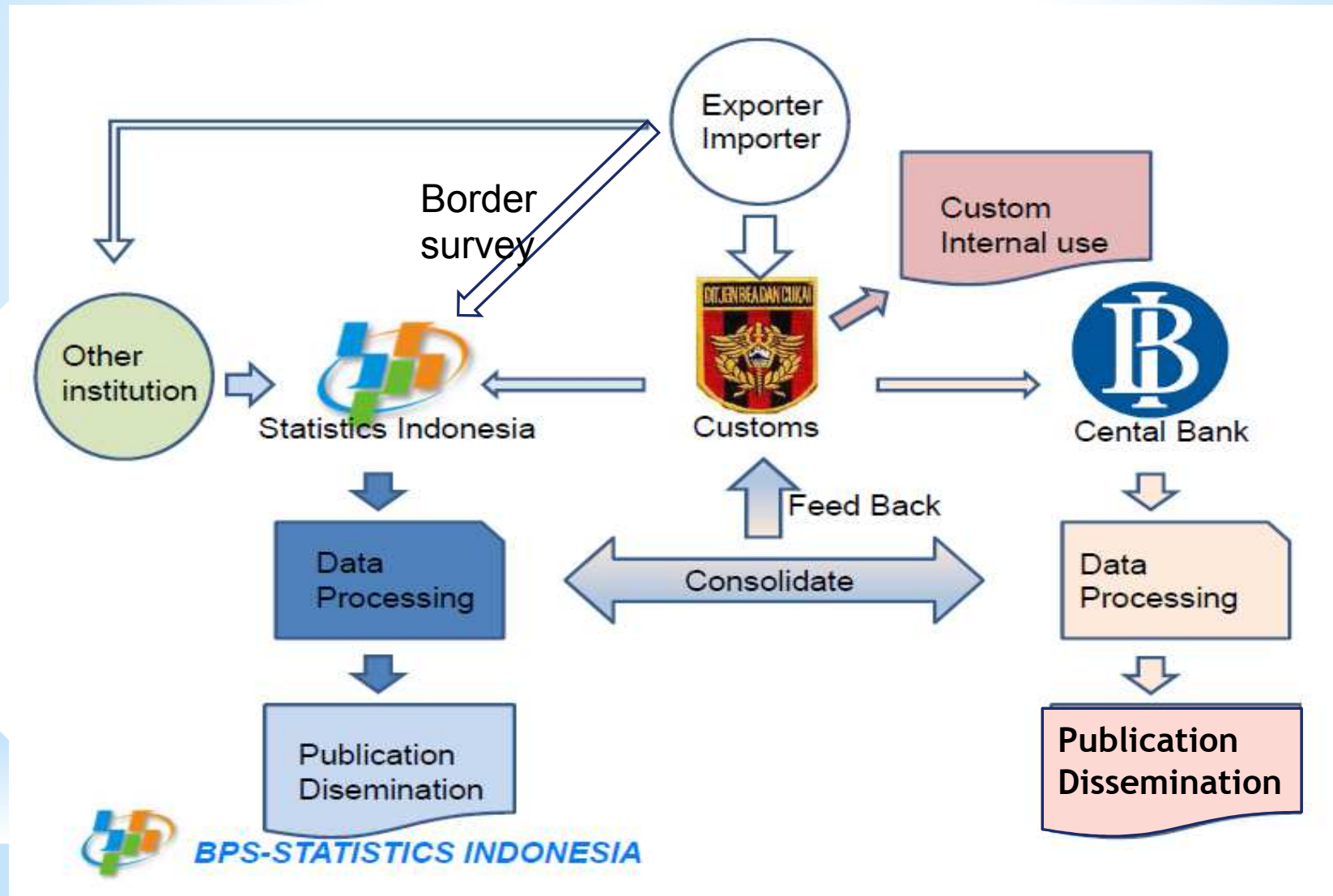
Inter Institutional Platform

1. Bea Cukai-Custom Office: as a provider of the data (administrative data)
 - ❖ Exporter and importer fill in the custom documents by system.
 - ❖ Send the data through system to BI and BPS
2. BPS-Statistics Indonesia:
 - ❖ Compiling Export and Import data based on Custom declaration refer to the IMTS.
 - ❖ Produce Export and Import Statistics monthly.
 - ❖ Disseminate export and import statistics
3. BI-Central Bank:
 - ❖ Compiling the Export and Import data based on Customs declaration refer to BPM 6
 - ❖ Produce Balance of Payments quarterly
 - ❖ Disseminate Balance of Payments

Other Sources for Merchandise Trade Statistics

1. Sea and land border survey:
 - obtained from BPS Regional Office monthly
 - form similar to custom declaration
2. Data from PT. Post:
 - monthly data from all Post Office in Indonesia
 - Information only value, volume, destination country
3. Ministry of Marine and Fishery:
 - monthly data
 - information on commodity, value, volume, destination country

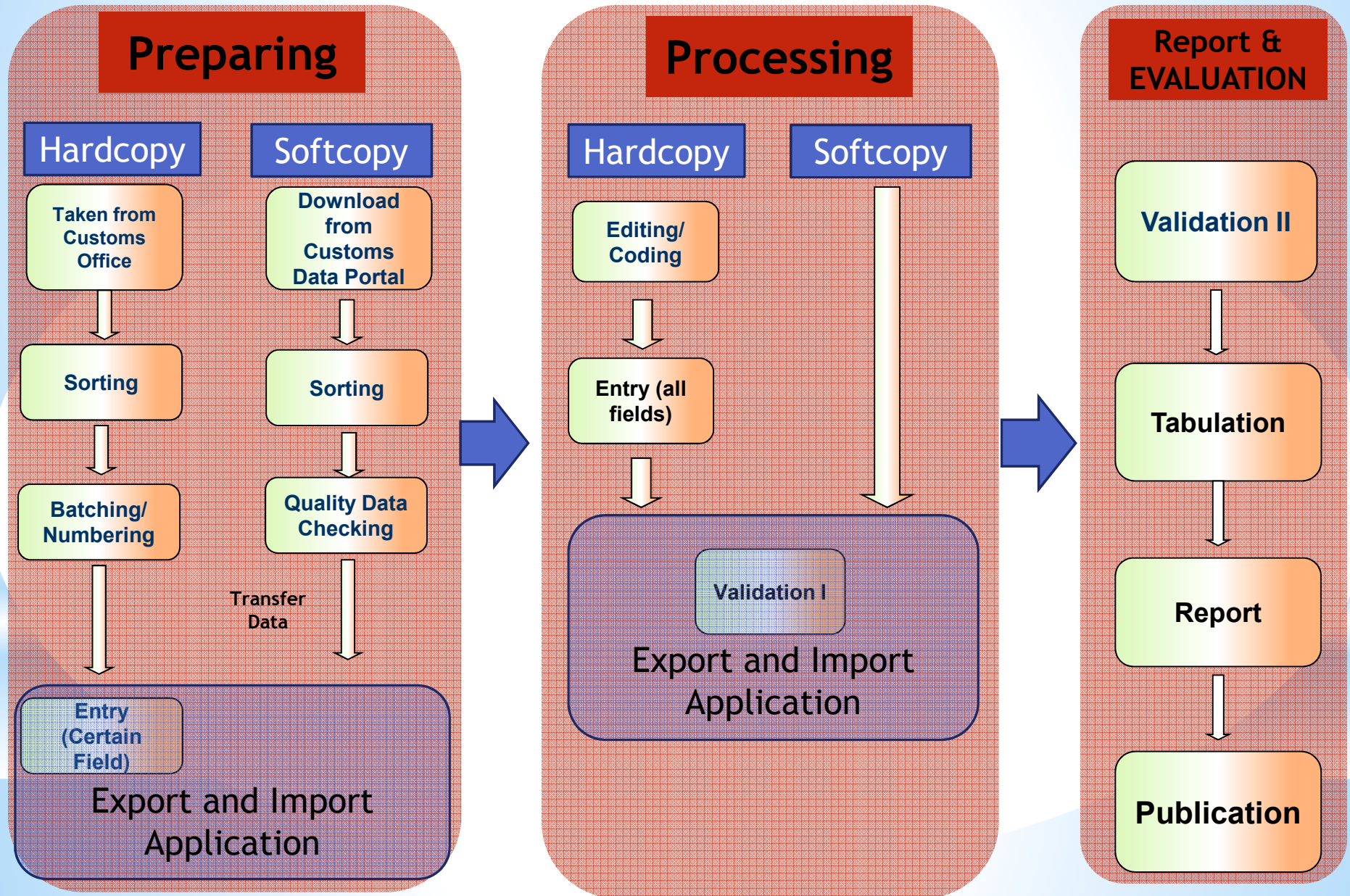
Merchandise Trade Statistics System



PROCESSING AND DISSEMINATION DATA



Document Processing



Dissemination

Since 2015 export and import data were presented with 15 days time lag and published every month in 15th (preliminary)

Fixed/final figure show the export and import data in detail numbers, while preliminary figure show data in aggregate numbers

On 15th September 2017 BPS-Statistics Indonesia published preliminary figure of August 2017 and fixed figure of July 2017.

- Preliminary figures are released within 15 days after the end of reference month.
- Fixed figures can be obtained within 30 days after the end of reference month.
- While annual data revision of export can be obtained within three months after the end of reference year.

Dissemination

Time recording: The date of customs clearance goods



- Classification of goods used in Merchandise statistics are Indonesian Tariff classification based on the Harmonized System (HS) 2017: 8 digits derived from AHTN (ASEAN Harmonized Tariff Nomenclature)
- Country code is based on the International Organization for Standardization (ISO 3166-1-alpha-2 code elements) .
- Using Standards International Trade Classification, Revision 3 (SITC Rev.3) and International Standard Industrial Classification (ISIC Rev.4)
- Classification of Import Goods based on Broad Economic Category (BEC)

Inter Agency Relationship in Compiling SITS and BOP

- BI-Central Bank is in charge for publishing the SITS and BOP.
- Main data source is from ITRS.
- BPS-Statistics Indonesia and Ministry of Tourism provide data on travel component (inbound and outbound tourist and their expenditure).
- BI share the SITS Data to BPS for compiling GDP by expenditure side.
- Regular meeting before release BOP ; involving many agencies/institutions.

Pelopori
Data Statistik
Terpercaya
Untuk Semua

Thank You



BPS - STATISTICS INDONESIA